

State or Country: California Field No. H51-187
County: San Diego Map: _____
Locality: S.E. San Clemente Isl., Lat. 32°54' N
Long. 117°47' W, to Lat. 33°02'30" N, Long.
117°56' W Lat. _____ N., Long. _____ W.
Water: Salt
Vegetation: _____

Bottom: grape (chart)
Cover: _____ Temp.: _____
Shore: _____ Current: _____
Dist. offshore: _____ Stream width: _____
Depth of capture: 150 fathoms Depth of water: to 700 fath.
Collected by R. Wisner, J. Kittredge, K. Norris, W. North
Tide: _____ M.V. "Paulina T." Date: V:21:1951
Method of capture: 10' mid-water beam trawl
Orig. preserv.: 10% formalin + borax Time: 2148 - 0030
See attached sheet.

*Field entry by Norris
See new sheet prepared
VIII:5:1951 C.L.H.*

State or Country: California Field No. H 51-187
 County: San Diego Map: CGS 5101, 1947
 Locality: San Diego Trough about midway between Del Mar and San Clemente Island
 Lat. 32°54' → 33°02'30"N, Long. 117°47' → 117°56' W

Water: salt
 Vegetation: _____

Bottom: nearest chart entries are 4y M. and gn M.
 Cover: none Temp: _____
 Shore: _____ Current: _____
 Dist. offshore: about 25 naut. miles Stream width: _____
 Depth of capture: est. 150 fathoms Depth of water: 500-570 fath. (chart)
 Collected by R. Wisner, K. Norris, J. Kittredge, W. North; on M.V. "Paulina T."
 Tide: _____ Date: V: 21: 1951
 Method of capture: 10-ft. beam-trawl or midwater trawl
 Orig. preserv.: 10% form + borax Time: 2148-0024 (haul 2155-2358)
 (→ 70 ethyl alcohol)

2 field sheets made out by K.S. Norris
Part of coll. found already sorted; 2 lots consolidated.
 VIII: 5: 1951
 Collection checked by Paul H. Hubbs

Only a few invertebrates picked out (collection probably rough-sorted before invertebrates largely brought in by Kittredge & North) (3 postlaras 16-22mm and 13)

- 9. Leuroglossus stilbius Gilbert: ^{Nigr.} 1 ad. (62-97 mm SL)
- ~~9. Bathylagus nigricornis Parr: 3 juv. (43 mm SL)~~
- 9. Bathylagus wesethi 3 (34-43)
- 10. Cyclothone acclinoides Garman: 1 ad. (43 mm SL)
- 10A. Argyropelecus hawaiiensis: 4 (9-51)
- 10. Cyclothone signata Garman: 1 subad. (33 mm SL)
- 10. Argyropelecus beatti intermedius: 1 postlarva (13 mm SL)
- Argyropelecus lybanus Garman: 2 postl. 45/49 mm + 1 ad. 51 mm SL
- 25. Electrona stretchii (Böttger): 3 subad. 1 higr. + 2 subad. (8+9), 19, 25, 28 mm
- To F.S. Rasz 25. Diaphus theta Eigenmann & Eigenmann: 2 higr. 30-49 - 52 mm SL
- Stenobranchius leucopsarus (Fig. & Fig.): 39 higr. - ad. 41-62 mm SL
- ~~Lampanyctus mexicanus (Gilbert): 4 ad. 47-57 mm SL~~
- 25A. Lampanyctus ritteri Gilbert: 3 juv. 46 mm + 1 ad. 71-109 mm
- 25B. Lampanyctus ingens Hubbs: 1 paratype, higr. 70 mm SL
- 31A. Melamphaes bispinosus (Gilbert): 1 higr. 38 mm SL
- Scopelogadus mizolepis
- To V.B.C. Melamphaes lugubris Gilbert: 1 higr. 40 mm SL
- 53. Sebastolobus altivelis Gilbert: 2 juv. 36-40 mm SL

- 64. *Citharichthys stigmaceus*: 1 postlarva (23.5 mm.) D. 90, A 72
- 25 *Hierops crockeri* 3 (19-29)
- 10 *Argyrolepiscus lychnus* 2 (8-14)
- 25 *Triphoturus mexicanus mexicanus* 4 (47-53) ○

Calif. S.E. of San Clemente Island

H51-187

32°54'-02"30"N to 117°47'-56"W

R. Wisner and party V:21:1951

9 *Neuroglossus stilbius* Gilbert.

10 *Argyropelecus lychnus*

Idiacanthus antrostomus Gilbert

25 *Diaphus theta* (Lütken)

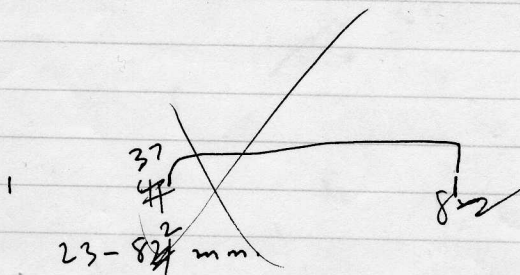
Lampanyctus Ritteri Gilbert

Stenobranchius leucopsarus (E.+E.)

31 *Melamphaes bispinosus*

~~*Melamphaes*~~

53 *Sebastolobus altivelis*



H51-149 jars ~~labels~~ to be changed as to depth

K. S. Norris

V: 21: 1957

Mid-water trawl

H51487

Net in water 2148

Winch secured at 2155 with
700 meters of cable out. Net at
150 fathoms

Lat. 32°54' N, Long. 117°47' W.
when net launched.

Commenced retrieving trawl 2358

Net on board. 0024

Lat. 33°02'30" N, Long. 117°56' W.
when net brought aboard.

Angle of depression of wire —
Ship's speed 4 knots.